



**LA
AUTORIDAD**

**EN FLUJO
DE AIRE**



BIGASSFANS™

EQUISA
PRODUCTOS INDUSTRIALES

INDUSTRIAL OVERHEAD FANS

Bigger. Stronger. Tougher.
The next level of innovation is here.

BEST-IN-CLASS AIRFLOW FOR MAXIMUM PRODUCTIVITY

Featuring multi-patented designs and best-in-class safety features, Big Ass industrial overhead fans neutralize sweltering heat in summer, equalize facility temperatures in winter, and offer air circulation and energy savings that HVAC and traditional fan manufacturers can only dream of.

- ▶ **Superior airflow coverage**
- ▶ **Energy-efficient motors with heat dissipation**
- ▶ **Extruded aluminum assembly with Grade 8 hardware**
- ▶ **Digital touchscreen controller**
- ▶ **Extensive industry-leading safety features**
- ▶ **Patented airfoil systems**
- ▶ **Reliable IP protection**
- ▶ **Modbus, BACNET and 0-10v BAS integration capability**



12-30' feet
(3.7-9.1 meters)



- ▶ **Eight state-of-the-art airfoils** redesigned for maximum airflow and world class efficiency
- ▶ **NitroSeal™ gearbox** hermetically sealed for durability and longevity
- ▶ **Standard IP56 rating for the entire fan** makes it perfect for harsh environments
- ▶ **Re-engineered and patented airfoil** providing the largest CFM on the market
- ▶ **Best-in-class safety features** including aircraft-grade steel safety cables and patented dual-axis mounting system
- ▶ **Available upgrades** include control systems, occupancy sensor, LED kit, and more



POWERFOIL D®

The industrial fan that's the strong, silent type.



8-24 feet
[2.4-7.3 meters]



- ▶ **Six aluminum airfoils** with winglets and safety restraints
- ▶ **Direct-drive motor** and VFD reduce noise, EMI, and energy usage
- ▶ **Built-in accelerometer** and safety cables
- ▶ **IP66-rated protection** against dust, water, and vapors
- ▶ **Building automation integration** with 0-10 VDC, Modbus, and BACnet capability
- ▶ **Available LED** offers ultra-bright, fully dimmable lighting



14-24 feet
[4.3-7.3 meters]



- ▶ **Eight aluminum airfoils** with AirFence® system, winglets, and safety restraints
- ▶ **Massive air circulation** and coverage area
- ▶ **IP56-rated motor** and helical gearbox for smooth, durable operation
- ▶ **Variable speed operation** with resistive touch controller
- ▶ **Oversized hub system** machine-cut to evenly distribute load
- ▶ **Inline, helical-cut gears** for efficient, reliable and durable operation



BASIC 6®

Quality craftsmanship and massive air movement.



14–24 feet
[4.3–7.3 meters]



- ▶ **Six aluminum airfoils** with winglets and safety restraints
- ▶ **Redundant safety features** keep workers cool without worry
- ▶ **Sealed helical gearbox** and industrial motor for smooth, durable operation
- ▶ **Variable speed operation** with convenient digital touchscreen controller
- ▶ **Machine-cut hub system** evenly distributes load for longer lifespan
- ▶ **Wide airflow coverage** improves existing HVAC efficiency

BAFCON™

Effortlessly control your facilities comfort and energy use.

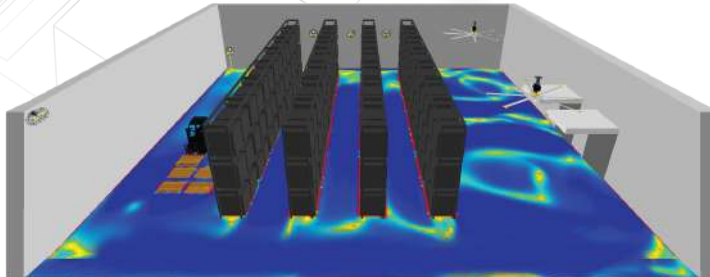
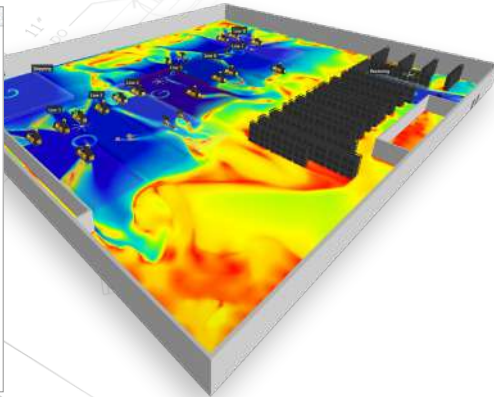
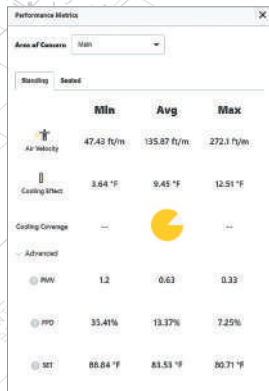


- ▶ Resistive, **LED-backlit touchscreen** ideally suited for industrial conditions
- ▶ Multi-level **password protection** keeps your preferred settings secure
- ▶ Mounts to **standard junction box** with single RJ45 cable
- ▶ **Group up to eight fans** for easy control from one location
- ▶ User-friendly **onboard fan diagnostics** and troubleshooting
- ▶ Enabled for easy **in-field firmware updates** via Bluetooth



Customized facility simulations with detailed performance metrics.

Leading the industry in airflow technology, SpecLab can quickly and accurately create custom 3D models of the most complex facilities—complete with interior walls and other building elements that impact airflow—to run precise simulations of our fans' performance.



FACTORY-CERTIFIED INSTALLATION

Guaranteed results backed by best in class service with Big Ass Fans' certified installers.

- ▶ **Network of licensed electrical/HVAC technicians** who meet stringent certification and service requirements to wire, position, and mount your fans securely ensuring superior performance that lasts
- ▶ Coordination with installers, pulling necessary permits, and running logistics providing **minimal facility downtime** and a quick return to business
- ▶ Experience fewer issues that lead to warranty claims with a **built-in electrical warranty upgrade***



*Product exclusions apply.



COMMERCIAL AND RESIDENTIAL FANS

THE WORLD'S SMARTEST FANS

Seamless control and smart home integration.

ELEVATED AIRFLOW SOLUTIONS

No matter what aesthetic inspires your lifestyle or business, Big Ass Fans gives you the opportunity to transform your ceiling into a centerpiece. Our commercial and residential fans come in a variety of premium finishes and custom colors to complement any décor, while their silent direct-drive motors ensure comfort without distraction.

- ▶ **Patented design and engaging style**
- ▶ **Handcrafted with premium materials**
- ▶ **Range of available custom colors and luxurious finishes**
- ▶ **Versatile mounts for flat and sloped ceilings**
- ▶ **Virtually silent direct-drive motors**
- ▶ **World-class efficiency and energy-savings**
- ▶ **Unrivalled smart technology and control**
- ▶ **Unparalleled air movement and coverage areas**



Amazon Alexa



Google Assistant



ecobee Smart Thermostats



IR & Bluetooth control equipped with backlighting and accelerometer provides control of fan and light settings



Use our mobile app for control from anywhere within a Wi-Fi network.

ESSENCE®

Big airflow delivers a masterful performance.



8-14 feet
(2.4-4.3 meters)



- ▶ **Eight anodized airfoils** with winglets and safety restraints
- ▶ **Virtually silent**, gearless direct-drive motor
- ▶ **Lightweight design** mounts to bar joists, beams, purlins, and wood frames
- ▶ **Optional UV-C upgrade** proven to eliminate pathogens
- ▶ **Available LED** offers ultra-bright, fully dimmable lighting
- ▶ **Color customization** available to optimize your perfect style

i6™

Inspired by industry.
Built for comfort.



60, 72, 84, and 96 inches
(152, 183, 213, and 244 cm)



- ▶ **Six premium airfoils** built from aircraft-grade aluminum
- ▶ **Patented brushless DC motor** for silent, efficient performance
- ▶ **Built-in SenseMe™ technology** for automated convenience and efficiency
- ▶ **Voice integration** with Amazon Alexa and Google Assistant devices
- ▶ **Available light kit** with fully dimmable, color-changing LED
- ▶ **Mobile app integration** for easy smart fan control from your smartphone or tablet devices

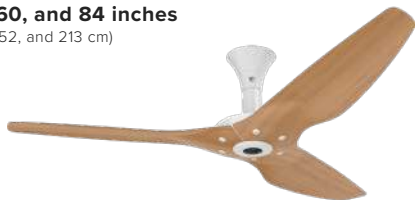


HAIKU®

Innovative by design.
Elegant by nature.



52, 60, and 84 inches
(132, 152, and 213 cm)



- ▶ **Hand-balanced airfoils** made from Moso bamboo, aircraft-grade aluminum, or matrix composite airfoils
- ▶ **Brushless DC/EC motor** for whisper-quiet, energy-efficient airflow
- ▶ **Energy Star® rated** for sustainable, LEED-certified projects.
- ▶ **LED uplight and downlight** options for superior illumination
- ▶ **Built-in SenseMe™ technology** for automated convenience and first-in-class efficiency
- ▶ **Voice integration** with Amazon Alexa and Google Assistant devices

es6®

Contemporary style with
commanding performance.



60, 72, and 84 inches
(152, 183, and 213 cm)



- ▶ **Six airfoils** made from aircraft-grade aluminum
- ▶ **Brushless DC/EC motor** provides smooth, quiet comfort with seven airflow speeds
- ▶ **Lightweight design** mounts to standard junction box on ceilings as low as 9 feet (2.7 meters)
- ▶ **Convenient control** with SenseME™ technology, mobile app, and voice integration
- ▶ **Advanced safety features** and corrosion-resistant materials for worry-free operation
- ▶ **Available LED kit and Chromatic Uplight** offers 16 brightness levels, smart automation, night light mode, and a full range of color options



HAIKU® L

Bringing comfort and elegance within reach.



44 and 52 inches
(112 and 132 cm)



- ▶ **Hand-balanced** hybrid resin airfoils in black, white, caramel, and cocoa finishes
- ▶ **Seamlessly integrated LED kit** with 16 dimmable settings
- ▶ **Handheld remote** with wall mount; optional 0–10V, and wired wall controls
- ▶ **Brushless EC motor** for whisper-quiet, energy-efficient operation
- ▶ **Seven speed settings** with optional modes for preferred airflow
- ▶ **Optional Wi-Fi module** for mobile app and voice control integrations



DIRECTIONAL FANS

AIRFLOW THAT GOES ANYWHERE YOU NEED IT

Obstructions such as racking, cranes, and conveyor systems can preclude overhead airflow solutions. To address these challenges, we engineered powerful directional fan models ideally suited for mobile and wall-mounted use, so you can keep people cool in every corner of your space regardless of your facility's layout.

- ▶ **Heavy-gauge steel construction**
- ▶ **Wide variety of portable bases and mounting options**
- ▶ **Available IPX5, washdown-ready designs**
- ▶ **OSHA-compliant cages standard for all floor fan models**
- ▶ **Easy plug-and-play operation**
- ▶ **Airflow coverage up to 120 feet (37 meters) away**
- ▶ **Quiet, efficient motors that cost pennies a day to operate**
- ▶ **Versatile positioning to target anywhere**

BLACK JACK®

Powerful airflow that's
a breeze to maneuver.



6.5 feet
(2.0 meters)



- ▶ **Six anodized airfoils** with winglets in an OSHA-compliant cage
- ▶ **Powerful airflow** provides coverage up to 120 feet (37 meters) away
- ▶ **Quiet, efficient EC motor** with variable speed control
- ▶ **6.5-ft (2-m) frame** to fit through standard interior doorways
- ▶ **Maneuvers indoors or out** with durable rubber wheels and handles
- ▶ **Arrives assembled** for plug and play use



8 feet
(2.5 meters)



- ▶ **Six anodized airfoils** with winglets in an OSHA-compliant cage
- ▶ **Quiet, efficient EC motor** with variable speed control
- ▶ **8 foot frame with full 360° tilt** with 16 lockable positions
- ▶ **Locking swivel casters** allow for optimal maneuverability
- ▶ **Powerful airflow** provides coverage up to 120 feet (37 meters) away
- ▶ **Indoor or outdoor** operation for cooling that goes anywhere



SIDEKICK®

The most advanced
barrel fan ever created.

↻ **4 feet**
(1.2 meters)



- ▶ **Six-airfoil design** with a sleek, vented frame
- ▶ **Variable speed control** with adjustable dial
- ▶ **Conveniently sized** for quick use and easy storage
- ▶ **Provides 120 feet of airflow** when and where you need it
- ▶ **Quiet, efficient EC motor** with variable speed control
- ▶ **Arrives assembled** for immediate use

PIVOT

The flexible big fan fit for
every corner of your workspace.

↻ **6.35 feet**
(1.9 meters)



- ▶ **Six anodized airfoils** with winglets in a durable steel cage
- ▶ **Smooth, quiet performance** with variable speed control
- ▶ **Gearless direct-drive motor** and precision-molded hub for maximum efficiency
- ▶ **Powerful airflow** provides coverage up to 120 feet (37 meters) away
- ▶ **Suite of safety features** including airfoil retainers and guy wires
- ▶ **Direct airflow anywhere** with over 1,000 operational positions



AIREYE®

The most advanced
directional fan on the market.



**20, 24, 30, and
36 inches**
(51, 61, 76, and 91 cm)



- ▶ **Three Galvalume® steel airfoils** precision-balanced for smooth performance
- ▶ **IP65-rated EC motor** for excellent protection from dust and water
- ▶ **Five mounting options** to suit any facility or application
- ▶ **50% more CFM per watt** than basic induction motors
- ▶ **BMS integration with optional BAFCon controller** for virtually infinite airflow settings
- ▶ **Occupancy sensor** available for added convenience and energy savings



30 inches
(76 cm)



- ▶ **Heavy-gauge steel frame** for durability in industrial applications
- ▶ **Vibration dampening** with high-density polyethylene housing
- ▶ **Three durable airfoils** with progressive-pitch geometry
- ▶ **Variable speed settings** with powerful and efficient 1/2 HP motor
- ▶ **360° rotation** with lockable positioning
- ▶ **Optional fan oscillator** or remotely mounted control options



EVAPORATIVE COOLERS

COOL-SPACE® 500

Cooling power on a large scale.

THE FAST-ACTING SOLUTION TO EXTREME HEAT

Combining efficient direct-drive fan technology with robust water systems and thick, resin-treated media, Cool-Space® evaporative coolers deliver instant airflow that lowers the air temperature and keeps your people safe, comfortable, and productive.

- ▶ Quickly and efficiently cool spaces by up to 33 °F (18 °C)
- ▶ Mobilize anywhere you need it with locking swivel casters
- ▶ Easily adjust level of cooling with variable speed control
- ▶ Take advantage of long-term cost savings over A/C installation and use
- ▶ Create healthier environments with third-party certified media

- ▶ Enjoy best-in-class durability and warranties for long product life



- ▶ Ideal for **large warehouses, service bays, and stadiums**
- ▶ Coverage area of **6,500 square feet** (600 square meters)
- ▶ **Occupancy sensor** and onboard LED control panel
- ▶ **Auto-Dry** feature maintains the unit after each use
- ▶ Uses standard **110-volt power** supply



COOL-SPACE® 400

Quiet, energy-efficient operation
indoors and out.



- ▶ Perfect for **production facilities, open-air dining, and gyms**
- ▶ Coverage area of **3,600 square feet** (330 square meters)
- ▶ Uses standard **110-volt power supply**

COOL-SPACE® 350

Deliver cooler conditions at a
moment's notice.



- ▶ Best suited for **warehouses, factories, and outdoor patios**
- ▶ Coverage area of up to **2,300 square feet** (210 square meters)
- ▶ **50-gallon reservoir** lasts up to 10 hours without hose



COOL-SPACE® 300

The feature-packed evaporative cooler that goes where you need it.



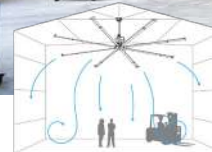
- ▶ Great for **workshops, garages, and studios**
- ▶ Coverage area of **1,200 square feet** (110 square meters)
- ▶ **Large swivel casters** for ease of mobility



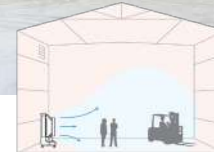
ULTIMATE COOLING COMBO

Create bigger impact with fans and coolers.

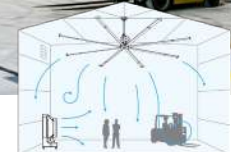
- ▶ Combining Cool-Space evaporative coolers with Big Ass fans delivers a powerhouse cooling effect that's second to none.
- ▶ When you pair your Cool-Space coolers with our industrial overhead fans, cold air is distributed throughout your facility.
- ▶ Cool-Space units and Big Ass fans work together to directly lower temperatures for optimal performance



Fans



Coolers



Fans + Coolers

INFRARED AND UNIT HEATERS

BIG ASS FANS INFRARED HEATER

Energy-efficient, targeted heating.

HEATING TO KEEP YOUR TEAM COMFORTABLE AND PRODUCTIVE

Backed by the same level of engineering expertise, custom recommendations, and post-purchase support that you know to expect from Big Ass Fans, Infrared and Unit Heaters are the best, most energy-efficient way to keep people warm through extreme cold.

Create the most energy-efficient, comfortable environment imaginable with a custom deployment of Big Ass fans and heaters.

- ▶ **Two heater types to meet your facility's unique needs**
- ▶ **High-quality construction for longevity and limited maintenance**
- ▶ **Pairs perfectly with HVLS fans to prevent heat loss**
- ▶ **Year-round comfort increases worker safety, productivity, and retention**



- ▶ **The most energy-efficient type of heating option, warming objects in targeted areas with less stratification**
- ▶ **Designed to pair with a ceiling fan and thermostat control, to create the most purpose-built heating bundle on the market**
- ▶ **By heating objects, heat energy is stored in those objects, improving employee comfort and productivity over long periods of time**

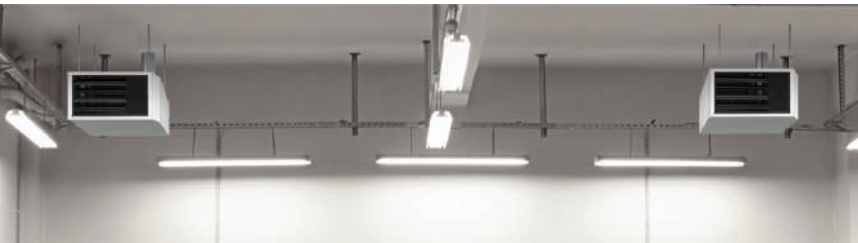


BIG ASS FANS UNIT HEATER

Massive heating through an entire space.



- ▶ **Full-facility heating** that circulates air over and around obstacles
- ▶ **Safe installation** and speedy servicing
- ▶ **Vibration- and noise-isolating fan motor** ensures quiet operation through the life of the product
- ▶ **Works with HVLS fans** to spread warm air through large spaces



BIG ASS FANS AND HEATERS

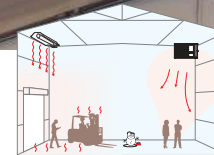
Achieving maximum efficiency.

EQUISA
PRODUCTOS INDUSTRIALES

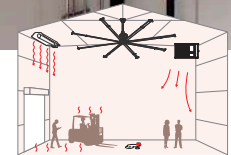
When combined together, Big Ass fans and heaters provide powerful heat with industry-leading air-mixing to fight stratification and bring comfort to every corner of the customer's facility.



No heaters



**Infrared and
unit heaters only**



**HVLS fans and
heaters together**



**BIG ASS
FANS®**

EQUISA
PRODUCTOS INDUSTRIALES

Libramiento Noreste Km 28,
CP 66050, Escobedo, Nuevo Leon.

Contactanos al Tel : **81 17 99 70 70**

o **81 19 40 08 50**

EQUISA.MX

Product availability varies by region.